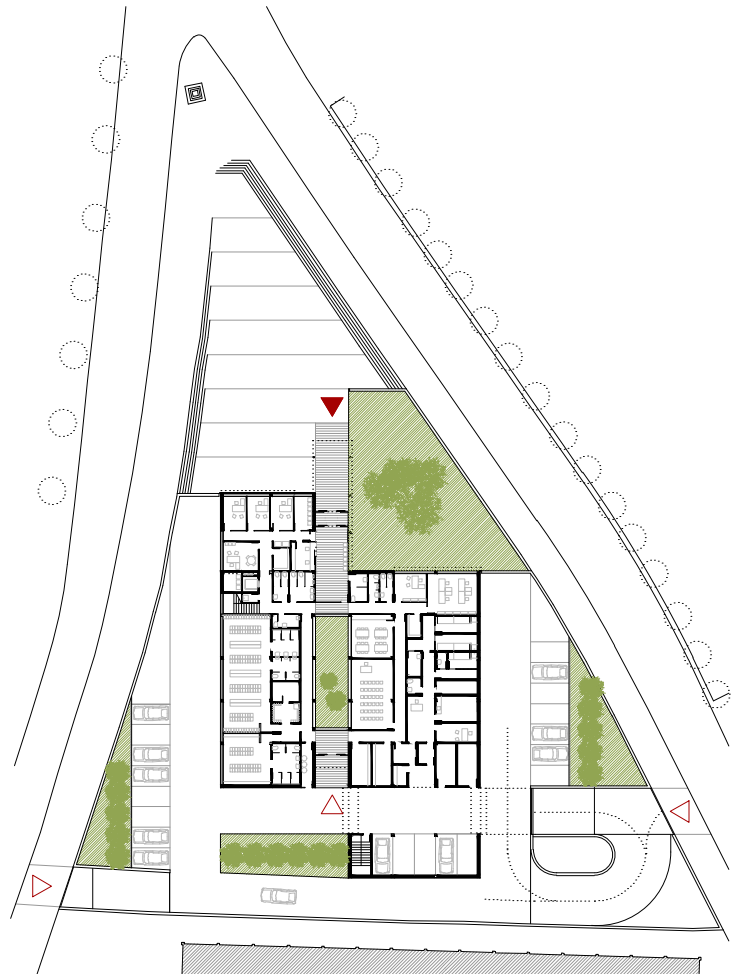


- authors: oriol cusidó & irene marzo
- developer: gisa, generalitat de catalunya
- commission: 1st prize restricted competition
- built area: 1.673 m<sup>2</sup>
- developed area: 2.498 m<sup>2</sup>
- cost: 4.018.963 €
- location: road N-240, km. 36  
montblanc, tarragona
- awards: selected biennial arquitectura 'alejandro de la sota'

The building is in a extension area in the outskirts of the village, between the last residential blocks and an anodyne industrial area. It stays in a triangular plot that terminates town's south exit road, facing the village centre in order to be opened to the incoming flows. Its position releases the north part to create a welcome public square and defines in the south part a private interior alley, that relates perimeter streets one each other, in order to optimize traffic and police cars access.

The building is formed by two north-south oriented volumes sliding around a central courtyard that provides natural light to all spaces and manages the access system in its own axis. Public entrance to the north and private acces in the south. In front of such an outlying and shapeless environment, the building is clear and understandable. Corporative white is assumed to qualify the exterior skin, trusting its neutrality and opennes values and blue is chosen for the interior façades. This interior-exterior duality exists again in the façade solutions: the exterior façades are flat, opaque and massive while the interior get texture with a miniwave plate, explaining the volume explosion that produced the "cut" that opens the building to town.

To speed up construction works, that lasted just 8 months, several prefabricated systems were used: metallic structure, ventilated façades with thermosetting resins panels and metallic plates, division walls made of modulated screens, floating roofs, etc.







The regular structure is composed by hot-rolled steel sections and composite floor deck. All façades are ventilated and include as thermal insulation, mineral wool fixed on the main hollow block wall. The interior façades are finished with miniwave plate and the exterior with thermosetting resins panels fixed on an aluminium substructure.



The exterior and interior finishing are worked at the same time. Walls with safety needs are made with reinforced hollow blocks, meanwhile office division walls are done with high acoustic and mechanical quality modular screens. The same laminated panel is used by the interior side of the exterior envelope.

